

Cadmandu® TPM 6



File Management and Viewing for Engineering Environments

Welcome to Cadmandu

Cadmandu is AutoMate's state-of-the-art solution for managing and viewing engineering and office documents. It uses the industry-standard MSAccess database, or virtually any ODBC compliant database. Cadmandu offers the fastest and most capable viewing technology available to manage and view all industry-standard formats. Cadmandu runs on Windows 95, 98, & NT workstations and virtually any network.

Easy to Install and Administer

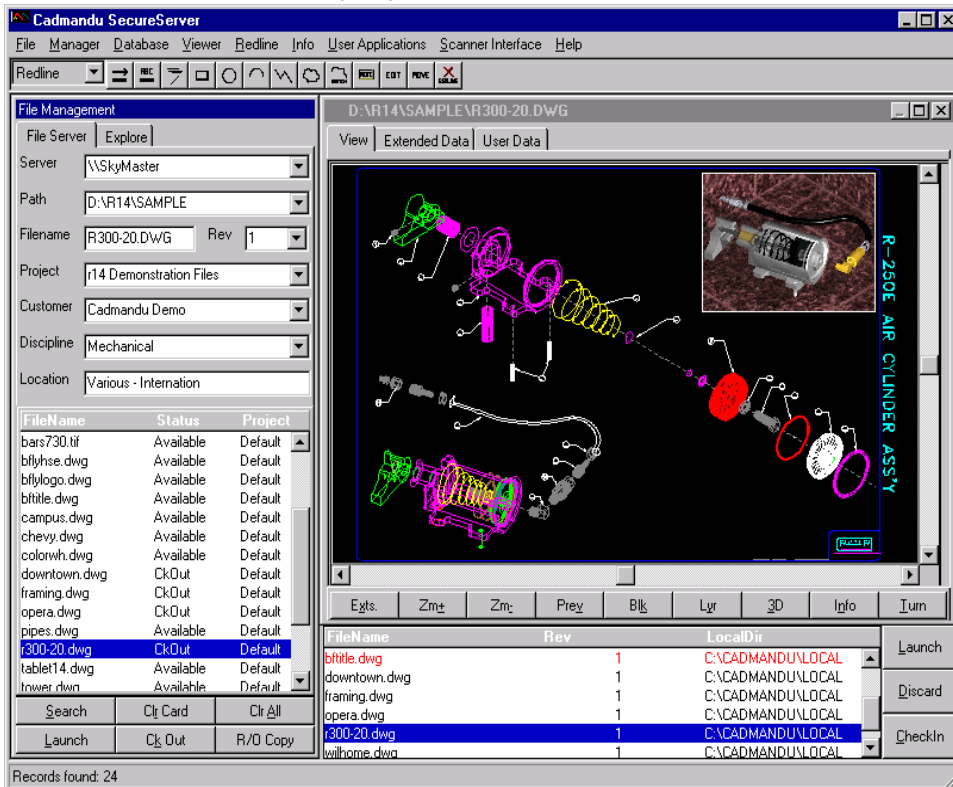
Cadmandu is easy to install, whether on one or more servers or on individual workstations. AutoMate provides basic instructions for system administrators in order to familiarize them with options that will minimize their administrative responsibilities. Administrators can at any time modify this table in order to fine-tune interfaces and operations, or to adapt to evolving needs.

Customization Available

In order to satisfy more complex and site-specific requirements, AutoMate will work with clients to help identify their special needs, and will provide the appropriate customization of more fundamental program operations. AutoMate takes pride in its ability to satisfy extremely demanding requirements, and has an impressive track record of satisfying the most demanding of client requirements.

Worldwide Satisfaction

With preferred software solutions and first-rate, direct-to-customer support, AutoMate has satisfied the file management needs of tens of thousands of users worldwide. No provider in the industry sets higher standards of customer satisfaction.



Easy to Learn and Use

Cadmandu's intuitive design make it easy for new users to master basic operations given only brief instructions - which AutoMate provides at time of installation. If desired, more extensive training is available.

See for yourself!

Live demo versions of all AutoMate products are available via the Internet at www.automate.net or www.cadmandu.com or directly from AutoMate Corporation and its authorized resellers.

(See reverse for program features.)

Cadmandu *TPM* Features and Specifications

File Management Features

- 32 bit Windows 95 & NT Compliant
- Application Launch
- Audit Trail - History Log
- AutoCAD® Block Insert (automatic)
- Browsing and Wildcards
- Concurrent Use Licensing
- Customizable Database, Fields & Labels
- Database Management Utilities
- DGN Tag & Reference File Management
- Display of Latest Revision
- Document Security Levels
- DWG Attribute Management
- Externalized Text for International Support
- File Check-In & Check-Out
- File Revision Control
- Import and Export Utilities
- Integrated TWAIN Compliant Scanning
- Messaging (e-mail)
- Multiple Database/File Locations
- Multiple File Search Methods
- Multiple User Security Levels
- NetBios, Netware, NFS, TCP/IP Compliant
- NotePad Associated File
- Password Protection
- Preview/View/Import
- Project and Group Management
- QBE (query by example) Searching
- Read Only (Scratch) Check-Out
- Remote Location Check-in/Check-out
- Revision Control
- Server Based Installation
- Supports Associated Tables
- Workflow/Routing Control
- Y2K Compliant
- *and more...*

Other AutoMate Products

Cadmandu SecureCAD Edition – high security version of Cadmandu TPM. ODBC compliant. Requires NT 4 server and TCP/IP network protocol support.

CadmanView – contains popular Cadmandu file management and viewing functionality, but without file checkout & checkin. Also available in *SecureCAD* Edition.

CadmanView Lite - a simple and inexpensive solution for viewing and printing files, particularly engineering files. Just find it... view it... print it... That's it!

File Viewing Features

- 3D Viewing
- Batch Printing/Plotting
- Block Viewing and Attributes
- Compare Files
- Cut & Paste to ClipBoard
- DGN Reference File and DWG XREF support
- Document Information
- File Conversion/Export (supports batch mode)
- Format Conversion and Export
- Full Screen Viewing
- Integrated Redlining
- Layers Control
- Multiple Viewing Windows
- Printing and Plotting
- Redline with export capabilities
- Redline Sketch Mode
- Stored and Saved Views
- Views 3D Files
- *and more...*

Viewing Formats

200+ formats, including: DWG, DGN, DXF, SLD, HPGL, CALS G4, CCITT G3/G4, BMP, WMF, PCX, PRT, TIFF, RLC, RLE, TGA and most word processors, spreadsheets, graphic and presentation formats and database tables.

Configuration Modes / Options

- *DEI* - Data Exchange Interface - Bi-directional AutoCAD attribute and MicroStation text-tag insertion and extraction.
- ODBC Database Connectivity Module
- Optional Annual Update/Maintenance/Support

Requirements

Server

- Any accessible network file server
- Min ~12MB disk space (for Cadmandu files)

Workstation

- 32 bit Windows 9x, NT 4.0, 2000
- 32MB memory (minimum)
- ~2MB local disk storage
- SVGA (800x600) recommended